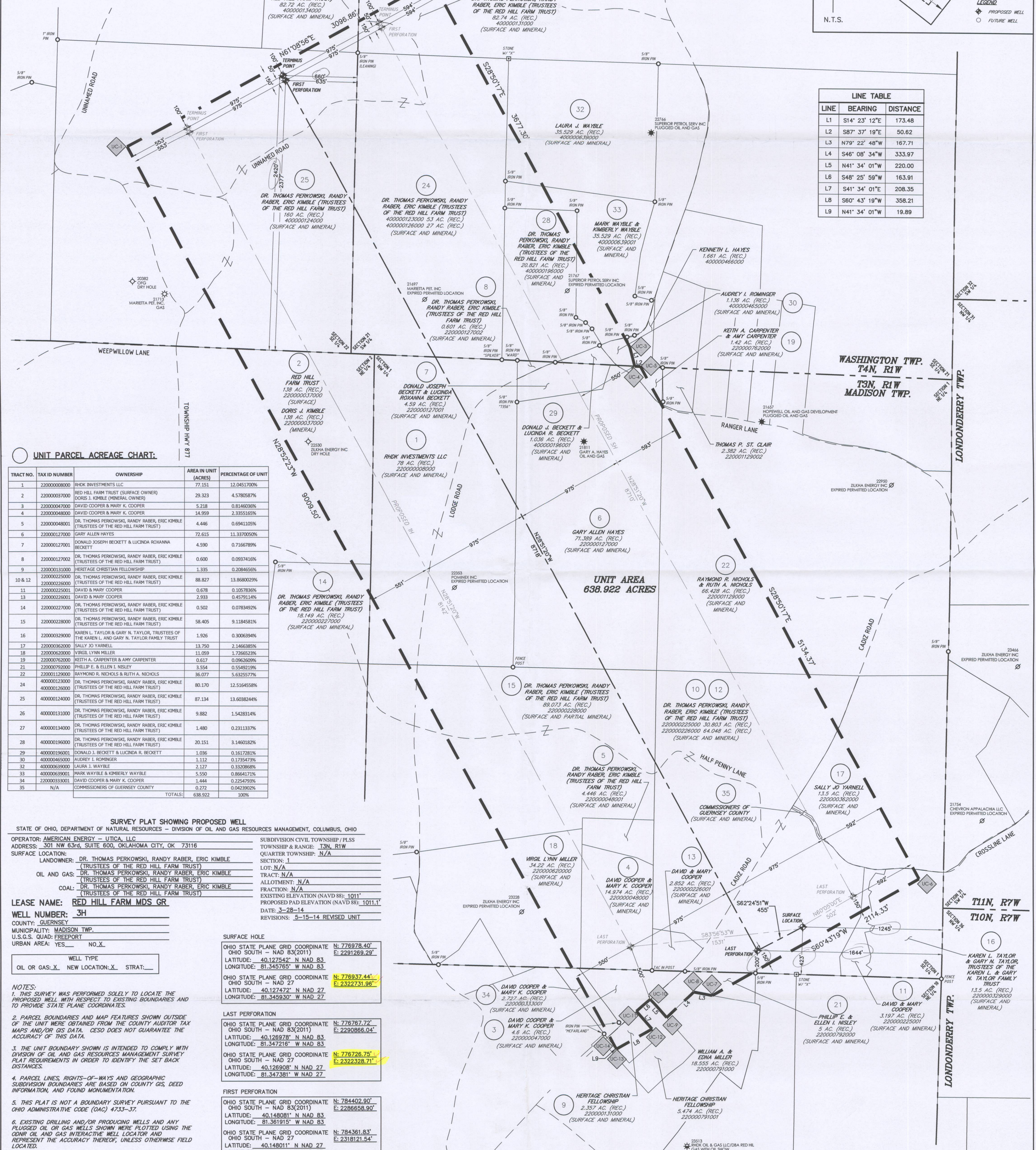


LOCATION MAP (NOT TO SCALE)



UNIT PARCEL ACREAGE CHART:

TRACT NO.	TAX ID NUMBER	OWNERSHIP	AREA IN UNIT (ACRES)	PERCENTAGE OF UNIT
1	22000008000	RHDK INVESTMENTS LLC	77.151	12.0451700%
2	220000037000	RED HILL FARM TRUST (SURFACE OWNER)	29.323	4.5780587%
3	220000047000	DAVID COOPER & MARY K. COOPER	5.218	0.8146036%
4	220000048000	DAVID COOPER & MARY K. COOPER	14.959	2.3355165%
5	220000048001	DR. THOMAS PERKOWSKI, RANDY RABER, ERIC KIMBLE (TRUSTEES OF THE RED HILL FARM TRUST)	4.446	0.6941109%
6	220000127000	GARY ALLEN HAYES	72.615	11.3700500%
7	220000127001	DONALD JOSEPH BECKETT & LUCINDA ROXANNA BECKETT	4.590	0.7166789%
8	220000127002	DR. THOMAS PERKOWSKI, RANDY RABER, ERIC KIMBLE (TRUSTEES OF THE RED HILL FARM TRUST)	0.600	0.0937416%
9	220000131000	HERITAGE CHRISTIAN FELLOWSHIP	1.335	0.2084656%
10 & 12	220000225000	DR. THOMAS PERKOWSKI, RANDY RABER, ERIC KIMBLE (TRUSTEES OF THE RED HILL FARM TRUST)	88.827	13.8680029%
11	220000225001	DAVID & MARY COOPER	0.678	0.1057836%
13	220000226001	DAVID & MARY COOPER	2.933	0.4579134%
14	220000227000	DR. THOMAS PERKOWSKI, RANDY RABER, ERIC KIMBLE (TRUSTEES OF THE RED HILL FARM TRUST)	0.502	0.0783492%
15	220000228000	DR. THOMAS PERKOWSKI, RANDY RABER, ERIC KIMBLE (TRUSTEES OF THE RED HILL FARM TRUST)	58.405	9.1184581%
16	220000329000	KAREN L. TAYLOR & GARY N. TAYLOR, TRUSTEES OF THE KAREN L. AND GARY N. TAYLOR FAMILY TRUST	1.926	0.3006394%
17	220000362000	SALLY JO YARNELL	13.750	2.1466385%
18	220000620000	VERGIL LYNN MILLER	11.059	1.7266523%
19	220000762000	KEITH A. CARPENTER & AMY CARPENTER	0.617	0.0952699%
21	220000792000	PHILLIP E. & ELLEN L. WISLEY	3.554	0.5489219%
22	220001229000	RAYMOND R. NICHOLS & RUTH A. NICHOLS	36.077	5.6325772%
24	400000123000	DR. THOMAS PERKOWSKI, RANDY RABER, ERIC KIMBLE (TRUSTEES OF THE RED HILL FARM TRUST)	80.170	12.516458%
25	400000124000	DR. THOMAS PERKOWSKI, RANDY RABER, ERIC KIMBLE (TRUSTEES OF THE RED HILL FARM TRUST)	87.134	13.6038244%
26	400000131000	DR. THOMAS PERKOWSKI, RANDY RABER, ERIC KIMBLE (TRUSTEES OF THE RED HILL FARM TRUST)	9.882	1.5428314%
27	400000134000	DR. THOMAS PERKOWSKI, RANDY RABER, ERIC KIMBLE (TRUSTEES OF THE RED HILL FARM TRUST)	1.480	0.2311337%
28	400000196000	DR. THOMAS PERKOWSKI, RANDY RABER, ERIC KIMBLE (TRUSTEES OF THE RED HILL FARM TRUST)	20.151	3.1460182%
29	400000196001	DONALD J. BECKETT & LUCINDA R. BECKETT	1.036	0.1617281%
30	400000465000	AUDREY L. ROMINGER	1.112	0.1735473%
32	400000639000	LAURA J. WAYBLE	2.127	0.3320868%
33	400000639001	MARK WAYBLE & KIMBERLY WAYBLE	5.550	0.8664171%
34	220000333001	DAVID COOPER & MARY K. COOPER	1.444	0.2254793%
35	N/A	COMMISSIONERS OF GUERNSEY COUNTY	0.272	0.0423902%
TOTALS:			638.922	100%

SURVEY PLAT SHOWING PROPOSED WELL

STATE OF OHIO, DEPARTMENT OF NATURAL RESOURCES - DIVISION OF OIL AND GAS RESOURCES MANAGEMENT, COLUMBUS, OHIO
OPERATOR: AMERICAN ENERGY - UTICA, LLC
ADDRESS: 301 NW 63rd, SUITE 600, OKLAHOMA CITY, OK 73116
SURFACE LOCATION: LANDOWNER: DR. THOMAS PERKOWSKI, RANDY RABER, ERIC KIMBLE (TRUSTEES OF THE RED HILL FARM TRUST)
OIL AND GAS: DR. THOMAS PERKOWSKI, RANDY RABER, ERIC KIMBLE (TRUSTEES OF THE RED HILL FARM TRUST)
COAL: DR. THOMAS PERKOWSKI, RANDY RABER, ERIC KIMBLE (TRUSTEES OF THE RED HILL FARM TRUST)
LEASE NAME: RED HILL FARM MDS GR
WELL NUMBER: 3H
COUNTY: GUERNSEY
MUNICIPALITY: MADISON TWP.
U.S.G.S. QUAD: FREEPORT
URBAN AREA: YES NO X

WELL TYPE: OIL OR GAS: X NEW LOCATION: X STRAT: X

NOTES:
1. THIS SURVEY WAS PERFORMED SOLELY TO LOCATE THE PROPOSED WELL WITH RESPECT TO EXISTING BOUNDARIES AND TO PROVIDE STATE PLANE COORDINATES.
2. PARCEL BOUNDARIES AND MAP FEATURES SHOWN OUTSIDE OF THE UNIT WERE OBTAINED FROM THE COUNTY AUDITOR TAX MAPS AND/OR GAS DATA. CESO DOES NOT GUARANTEE THE ACCURACY OF THIS DATA.
3. THE UNIT BOUNDARY SHOWN IS INTENDED TO COMPLY WITH DIVISION OF OIL AND GAS RESOURCES MANAGEMENT SURVEY PLAT REQUIREMENTS IN ORDER TO IDENTIFY THE SET BACK DISTANCES.
4. PARCEL LINES, RIGHTS-OF-WAYS AND GEOGRAPHIC SUBDIVISION BOUNDARIES ARE BASED ON COUNTY GIS, DEED INFORMATION, AND FOUND MONUMENTATION.
5. THIS PLAT IS NOT A BOUNDARY SURVEY PURSUANT TO THE OHIO ADMINISTRATIVE CODE (OAC) 4733-37.
6. EXISTING DRILLING AND/OR PRODUCING WELLS AND ANY PLUGGED OIL OR GAS WELLS SHOWN WERE PLOTTED USING THE ODNR OIL AND GAS INTERACTIVE WELL LOCATOR AND REPRESENT THE ACCURACY THEREOF, UNLESS OTHERWISE FIELD LOCATED.

AMERICAN ENERGY
UTICA

ceso
CREATION TO COMPLETION
www.cesoinc.com
Engineering • Architecture • Survey • Construction Mgt • Environmental
654 VANDERBILT STREET, DAYTON, OHIO 45408 (937-458-0800)

J. BRYANT, A.B. S-8593
REGISTERED PROFESSIONAL SURVEYOR
STATE OF OHIO

MAY 15, 2014

34 059 2 4370 00 00

SURFACE HOLE
OHIO STATE PLANE GRID COORDINATE N: 776978.40' E: 2291289.29'
OHIO SOUTH - NAD 83(2011)
LATITUDE: 40.127542° N NAD 83
LONGITUDE: 81.345765° W NAD 83
OHIO STATE PLANE GRID COORDINATE N: 776937.44' E: 2322731.96'
OHIO SOUTH - NAD 27
LATITUDE: 40.127472° N NAD 27
LONGITUDE: 81.345930° W NAD 27

LAST PERFORATION
OHIO STATE PLANE GRID COORDINATE N: 776787.72' E: 2290866.04'
OHIO SOUTH - NAD 83(2011)
LATITUDE: 40.126978° N NAD 83
LONGITUDE: 81.347216° W NAD 83
OHIO STATE PLANE GRID COORDINATE N: 776726.75' E: 2322328.71'
OHIO SOUTH - NAD 27
LATITUDE: 40.126908° N NAD 27
LONGITUDE: 81.347381° W NAD 27

FIRST PERFORATION
OHIO STATE PLANE GRID COORDINATE N: 784402.90' E: 2286658.90'
OHIO SOUTH - NAD 83(2011)
LATITUDE: 40.148081° N NAD 83
LONGITUDE: 81.361915° W NAD 83
OHIO STATE PLANE GRID COORDINATE N: 784361.83' E: 2318121.54'
OHIO SOUTH - NAD 27
LATITUDE: 40.148011° N NAD 27
LONGITUDE: 81.362080° W NAD 27

TERMINUS POINT
OHIO STATE PLANE GRID COORDINATE N: 784446.70' E: 2286634.77'
OHIO SOUTH - NAD 83(2011)
LATITUDE: 40.148202° N NAD 83
LONGITUDE: 81.361998° W NAD 83
OHIO STATE PLANE GRID COORDINATE N: 784405.63' E: 2318097.41'
OHIO SOUTH - NAD 27
LATITUDE: 40.148132° N NAD 27
LONGITUDE: 81.362164° W NAD 27

UNIT CORNER COORDINATES:

UNIT CORNER	SPC NAD 83 (OHIO SOUTH)	SPC NAD 83 (OHIO SOUTH)	GEO NAD 83	GEO NAD 83	SPC NAD 27 (OHIO SOUTH)	SPC NAD 27 (OHIO SOUTH)	GEO NAD 27	GEO NAD 27
NUMBER	NORTHING	EASTING	LATITUDE	LONGITUDE	NORTHING	EASTING	LATITUDE	LONGITUDE
UC-1	783797.21	2285248.62	40.146467	81.366987	783756.13	2316711.28	40.146398	81.367151
UC-2	785291.56	2287961.08	40.150475	81.357217	785250.50	2319423.70	40.150405	81.357282
UC-3	783070.19	2289744.78	40.141571	81.351020	783029.27	2321197.41	40.141502	81.351185
UC-4	781902.25	2289777.88	40.141109	81.350873	781861.23	2321240.52	40.141039	81.351038
UC-5	781900.15	2289828.46	40.141101	81.350892	781859.13	2321291.10	40.141032	81.350858
UC-6	777402.51	2292304.95	40.128669	81.342042	777361.55	2323767.61	40.128600	81.342207
UC-7	776368.50	2290460.71	40.125896	81.348884	776327.52	2321923.40	40.125827	81.348849
UC-8	776399.40	229095.87	40.125987	81.349272	776358.43	2321758.56	40.125917	81.349436
UC-9	776168.01	2290055.06	40.125360	81.352143	776127.03	2321517.75	40.125290	81.352098
UC-10	776332.61	2289909.09	40.125817	81.350658	776291.63	2321371.78	40.125747	81.350822
UC-11	776223.85	2289786.46	40.125523	81.351101	776182.88	2321249.15	40.125453	81.351266
UC-12	776067.97	2289924.70	40.125090	81.350614	776026.99	2321387.39	40.125020	81.350779
UC-13	775892.79	2289612.25	40.124620	81.351739	775851.81	2321074.95	40.124550	81.351904
UC-14	775907.67	2289599.05	40.124661	81.351785	775866.69	2321061.75	40.124592	81.351950