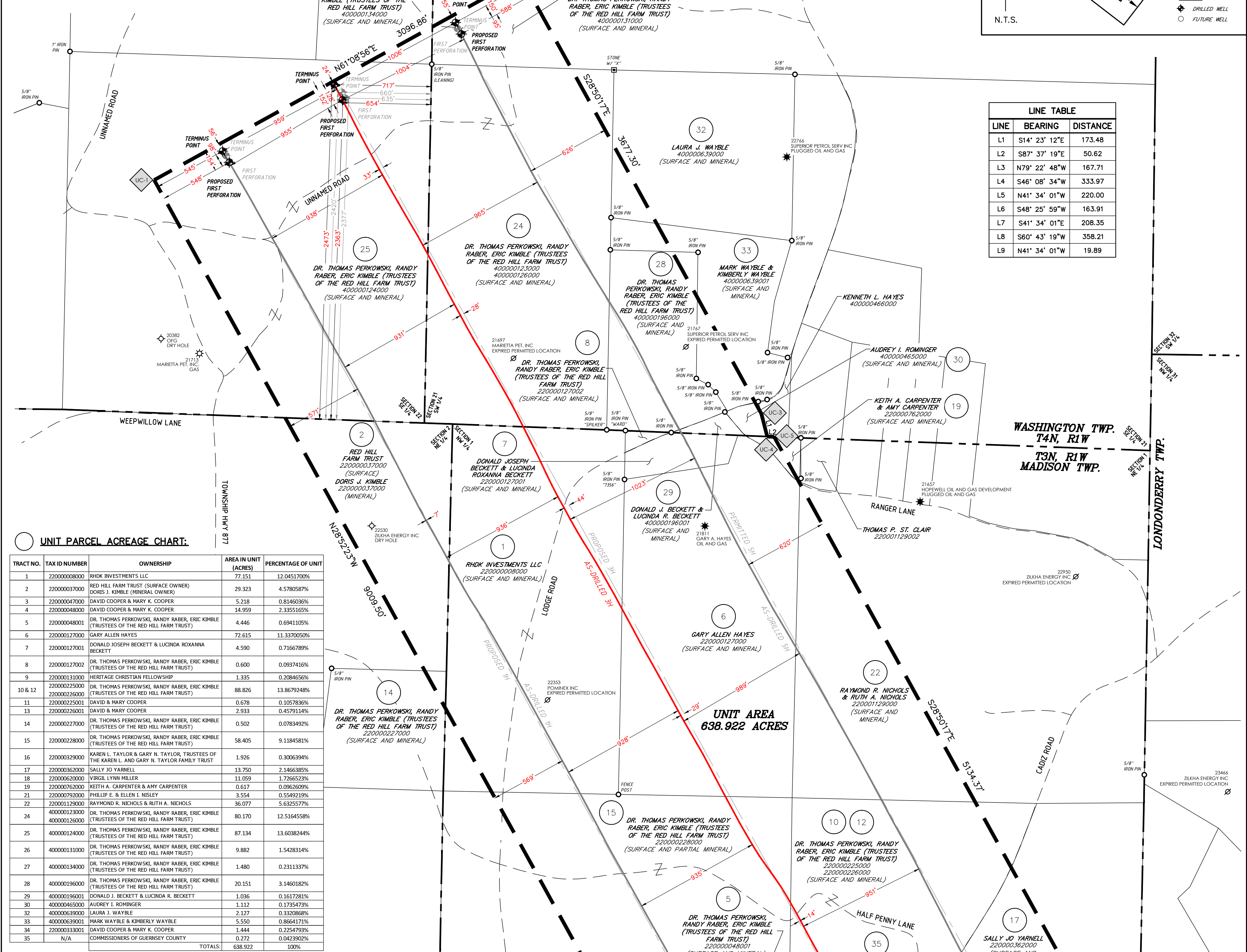


LOCATION MAP
(NOT TO SCALE)



UNIT PARCEL ACREAGE CHART:

TRACT NO.	TAX ID NUMBER	OWNERSHIP	AREA IN UNIT (ACRES)	PERCENTAGE OF UNIT
1	22000008000	RHDK INVESTMENTS LLC	77.151	12.0451700%
2	220000037000	RED HILL FARM TRUST (SURFACE OWNER)	29.323	4.5780587%
3	220000047000	DORIS J. KIMBLE (MINERAL OWNER)	5.218	0.8146036%
4	220000048000	DAVID COOPER & MARY K. COOPER	14.959	2.335165%
5	220000048001	DR. THOMAS PERKOWSKI, RANDY RABER, ERIC KIMBLE (TRUSTEES OF THE RED HILL FARM TRUST)	4.446	0.694105%
6	220000127000	GARY ALLEN HAYES	72.635	11.370050%
7	220000127001	DONALD JOSEPH BECKETT & LUCINDA ROXANNA BECKETT	4.590	0.7166789%
8	220000127002	DR. THOMAS PERKOWSKI, RANDY RABER, ERIC KIMBLE (TRUSTEES OF THE RED HILL FARM TRUST)	0.600	0.0937410%
9	220000131000	HERITAGE CHRISTIAN FELLOWSHIP	1.335	0.2084656%
10 & 12	220000225000	DR. THOMAS PERKOWSKI, RANDY RABER, ERIC KIMBLE (TRUSTEES OF THE RED HILL FARM TRUST)	88.826	13.8679248%
11	220000226000	DAVID & MARY COOPER	0.678	0.1057836%
13	220000226001	DAVID & MARY COOPER	2.933	0.4579114%
14	220000227000	DR. THOMAS PERKOWSKI, RANDY RABER, ERIC KIMBLE (TRUSTEES OF THE RED HILL FARM TRUST)	0.502	0.0783492%
15	220000228000	DR. THOMAS PERKOWSKI, RANDY RABER, ERIC KIMBLE (TRUSTEES OF THE RED HILL FARM TRUST)	58.405	9.1184581%
16	220000329000	KAREN L. TAYLOR & GARY N. TAYLOR, TRUSTEES OF THE KAREN L. AND GARY N. TAYLOR FAMILY TRUST	1.926	0.3006394%
17	220000362000	SALLY JO YARNELL	13.750	2.1466385%
18	220000620000	VIRGIL LYNN MILLER	11.059	1.7266523%
19	220000762000	KEITH A. CARPENTER & AMY CARPENTER	0.617	0.0962609%
21	220000792000	PHILLIP E. & ELLEN I. NISLEY	3.554	0.5549219%
22	220001129000	RAYMOND R. NICHOLS & RUTH A. NICHOLS	36.077	5.6325577%
23	400000123000	DR. THOMAS PERKOWSKI, RANDY RABER, ERIC KIMBLE (TRUSTEES OF THE RED HILL FARM TRUST)	80.170	12.5164558%
24	400000126000	DR. THOMAS PERKOWSKI, RANDY RABER, ERIC KIMBLE (TRUSTEES OF THE RED HILL FARM TRUST)	87.134	13.6038244%
25	400000124000	DR. THOMAS PERKOWSKI, RANDY RABER, ERIC KIMBLE (TRUSTEES OF THE RED HILL FARM TRUST)	9.882	1.5428314%
26	400000131000	DR. THOMAS PERKOWSKI, RANDY RABER, ERIC KIMBLE (TRUSTEES OF THE RED HILL FARM TRUST)	1.480	0.2311337%
27	400000134000	DR. THOMAS PERKOWSKI, RANDY RABER, ERIC KIMBLE (TRUSTEES OF THE RED HILL FARM TRUST)	20.151	3.1460182%
28	400000196000	DONALD J. BECKETT & LUCINDA R. BECKETT	1.036	0.1617281%
29	400000196001	AUDREY L. ROMINGER	1.112	0.1735473%
30	400000465000	AUDREY L. ROMINGER	2.127	0.3320868%
32	400000639000	LAURA J. WAYBLE	5.550	0.8664171%
33	400000639001	MARK WAYBLE & KIMBERLY WAYBLE	1.444	0.2254793%
34	220000333001	DAVID COOPER & MARY K. COOPER	0.272	0.0423902%
35	N/A	COMMISSIONERS OF GUERNSEY COUNTY	0.272	0.0423902%
TOTALS:			638.922	100%

SURVEY PLAT SHOWING AS-DRILLED WELL

STATE OF OHIO, DEPARTMENT OF NATURAL RESOURCES - DIVISION OF OIL AND GAS RESOURCES MANAGEMENT, COLUMBUS, OHIO

OPERATOR: AMERICAN ENERGY - UTICA, LLC

ADDRESS: 301 NW 63rd, SUITE 600, OKLAHOMA CITY, OK 73116

SURFACE LOCATION: LANDOWNER: DR. THOMAS PERKOWSKI, RANDY RABER, ERIC KIMBLE (TRUSTEES OF THE RED HILL FARM TRUST)

OIL AND GAS: DR. THOMAS PERKOWSKI, RANDY RABER, ERIC KIMBLE (TRUSTEES OF THE RED HILL FARM TRUST)

COAL: DR. THOMAS PERKOWSKI, RANDY RABER, ERIC KIMBLE (TRUSTEES OF THE RED HILL FARM TRUST)

LEASE NAME: RED HILL FARM MDS GR

WELL NUMBER: 3H

COUNTY: GUERNSEY

MUNICIPALITY: MADISON TWP.

U.S.G.S. QUAD: FREEPORT

URBAN AREA: YES NO X

WELL TYPE: OIL OR GAS: X NEW LOCATION: X STRAT: X

NOTES: 1. THIS SURVEY WAS PERFORMED SOLELY TO LOCATE THE PROPOSED WELL WITH RESPECT TO EXISTING BOUNDARIES AND TO PROVIDE STATE PLANE COORDINATES.

2. PARCEL BOUNDARIES AND MAP FEATURES SHOWN OUTSIDE OF THE UNIT WERE OBTAINED FROM THE COUNTY AUDITOR TAX MAPS AND/OR GIS DATA. CESO DOES NOT GUARANTEE THE ACCURACY OF THIS DATA.

3. THE UNIT BOUNDARY SHOWN IS INTENDED TO COMPLY WITH DIVISION OF OIL AND GAS RESOURCES MANAGEMENT SURVEY PLAT REQUIREMENTS IN ORDER TO IDENTIFY THE SET BACK DISTANCES.

4. PARCEL LINES, RIGHTS-OF-WAYS AND GEOGRAPHIC SUBDIVISION BOUNDARIES ARE BASED ON COUNTY GIS, DEED INFORMATION, AND FOUND MONUMENTATION.

5. THIS PLAT IS NOT A BOUNDARY SURVEY PURSUANT TO THE OHIO ADMINISTRATIVE CODE (OAC) 4733-37.

6. EXISTING DRILLING AND/OR PRODUCING WELLS AND ANY PLUGGED OIL AND GAS WELLS SHOWN WERE PLOTTED USING THE ODMR OIL AND GAS INTERACTIVE WELL LOCATOR AND REPRESENT THE ACCURACY THEREOF, UNLESS OTHERWISE FIELD LOCATED.

7. I HEREBY CERTIFY THAT OIL DRILLING OR PRODUCING WITHIN 1000 FEET AND ALL BUILDINGS AND STREAMS WITHIN 200 FEET HAVE BEEN SHOWN, THAT THIS PLAT IS TRUE AND CORRECT AND WAS PREPARED ACCORDING TO THE CURRENT STATE OF OHIO, DEPARTMENT OF NATURAL RESOURCES, DIVISION OF OIL AND GAS RESOURCES MANAGEMENT SPECIFICATIONS. THIS WELL PLAT WAS PREPARED IN COMPLIANCE WITH THE CURRENT STATE OF OHIO ADMINISTRATIVE CODE (OAC) 1501: 9-1-02 (A)(5)(g-i), OIL WELL DRILLING PERMIT, AND OHIO ADMINISTRATIVE CODE (OAC) 1501: 9-1-04, SPACING OF WELLS.

8. SURFACE HOLE: OHIO STATE PLANE GRID COORDINATE N: 776978.40' OHIO SOUTH - NAD 83(2011) E: 2291269.29' LATITUDE: 40.127542' N NAD 83 LONGITUDE: 81.545765' W NAD 83

9. OHIO STATE PLANE GRID COORDINATE N: 776937.44' OHIO SOUTH - NAD 27 E: 2322731.96' LATITUDE: 40.127472' N NAD 27 LONGITUDE: 81.345930' W NAD 27

10. PROPOSED LAST PERFORATION: OHIO STATE PLANE GRID COORDINATE N: 776787.29' 5.62 OHIO SOUTH - NAD 83(2011) E: 2289086.84' 2.29 LATITUDE: 40.126978' 2 N NAD 83 LONGITUDE: 81.347216' 30 W NAD 83

11. OHIO STATE PLANE GRID COORDINATE N: 776726.76' 4.65 OHIO SOUTH - NAD 27 E: 2322328.54' 4.97 LATITUDE: 40.126908' 2 N NAD 27 LONGITUDE: 81.347394' 95 W NAD 27

12. PROPOSED FIRST PERFORATION: OHIO STATE PLANE GRID COORDINATE N: 784409.90' 389.43 OHIO SOUTH - NAD 83(2011) E: 2286658.90' 39.48 LATITUDE: 40.148084' 44 N NAD 83 LONGITUDE: 81.361916' 85 W NAD 83

13. OHIO STATE PLANE GRID COORDINATE N: 784387.83' 48.36 OHIO SOUTH - NAD 27 E: 2318127.84' 02.12 LATITUDE: 40.148084' 287 N NAD 27 LONGITUDE: 81.362194' 362 W NAD 27

14. TERMINUS POINT: OHIO STATE PLANE GRID COORDINATE N: 784446.20' 502.20 OHIO SOUTH - NAD 83(2011) E: 2286658.90' 39.48 LATITUDE: 40.148084' 356 N NAD 83 LONGITUDE: 81.361916' 2198 W NAD 83

15. OHIO STATE PLANE GRID COORDINATE N: 784409.90' 389.43 OHIO SOUTH - NAD 27 E: 2318127.84' 02.12 LATITUDE: 40.148084' 287 N NAD 27 LONGITUDE: 81.362194' 362 W NAD 27

16. OHIO STATE PLANE GRID COORDINATE N: 784409.90' 389.43 OHIO SOUTH - NAD 27 E: 2318127.84' 02.12 LATITUDE: 40.148084' 287 N NAD 27 LONGITUDE: 81.362194' 362 W NAD 27

17. OHIO STATE PLANE GRID COORDINATE N: 784409.90' 389.43 OHIO SOUTH - NAD 27 E: 2318127.84' 02.12 LATITUDE: 40.148084' 287 N NAD 27 LONGITUDE: 81.362194' 362 W NAD 27

18. OHIO STATE PLANE GRID COORDINATE N: 784409.90' 389.43 OHIO SOUTH - NAD 27 E: 2318127.84' 02.12 LATITUDE: 40.148084' 287 N NAD 27 LONGITUDE: 81.362194' 362 W NAD 27

19. OHIO STATE PLANE GRID COORDINATE N: 784409.90' 389.43 OHIO SOUTH - NAD 27 E: 2318127.84' 02.12 LATITUDE: 40.148084' 287 N NAD 27 LONGITUDE: 81.362194' 362 W NAD 27

20. OHIO STATE PLANE GRID COORDINATE N: 784409.90' 389.43 OHIO SOUTH - NAD 27 E: 2318127.84' 02.12 LATITUDE: 40.148084' 287 N NAD 27 LONGITUDE: 81.362194' 362 W NAD 27

21. OHIO STATE PLANE GRID COORDINATE N: 784409.90' 389.43 OHIO SOUTH - NAD 27 E: 2318127.84' 02.12 LATITUDE: 40.148084' 287 N NAD 27 LONGITUDE: 81.362194' 362 W NAD 27

22. OHIO STATE PLANE GRID COORDINATE N: 784409.90' 389.43 OHIO SOUTH - NAD 27 E: 2318127.84' 02.12 LATITUDE: 40.148084' 287 N NAD 27 LONGITUDE: 81.362194' 362 W NAD 27

23. OHIO STATE PLANE GRID COORDINATE N: 784409.90' 389.43 OHIO SOUTH - NAD 27 E: 2318127.84' 02.12 LATITUDE: 40.148084' 287 N NAD 27 LONGITUDE: 81.362194' 362 W NAD 27

24. OHIO STATE PLANE GRID COORDINATE N: 784409.90' 389.43 OHIO SOUTH - NAD 27 E: 2318127.84' 02.12 LATITUDE: 40.148084' 287 N NAD 27 LONGITUDE: 81.362194' 362 W NAD 27

25. OHIO STATE PLANE GRID COORDINATE N: 784409.90' 389.43 OHIO SOUTH - NAD 27 E: 2318127.84' 02.12 LATITUDE: 40.148084' 287 N NAD 27 LONGITUDE: 81.362194' 362 W NAD 27

26. OHIO STATE PLANE GRID COORDINATE N: 784409.90' 389.43 OHIO SOUTH - NAD 27 E: 2318127.84' 02.12 LATITUDE: 40.148084' 287 N NAD 27 LONGITUDE: 81.362194' 362 W NAD 27

27. OHIO STATE PLANE GRID COORDINATE N: 784409.90' 389.43 OHIO SOUTH - NAD 27 E: 2318127.84' 02.12 LATITUDE: 40.148084' 287 N NAD 27 LONGITUDE: 81.362194' 362 W NAD 27

28. OHIO STATE PLANE GRID COORDINATE N: 784409.90' 389.43 OHIO SOUTH - NAD 27 E: 2318127.84' 02.12 LATITUDE: 40.148084' 287 N NAD 27 LONGITUDE: 81.362194' 362 W NAD 27

29. OHIO STATE PLANE GRID COORDINATE N: 784409.90' 389.43 OHIO SOUTH - NAD 27 E: 2318127.84' 02.12 LATITUDE: 40.148084' 287 N NAD 27 LONGITUDE: 81.362194' 362 W NAD 27

30. OHIO STATE PLANE GRID COORDINATE N: 784409.90' 389.43 OHIO SOUTH - NAD 27 E: 2318127.84' 02.12 LATITUDE: 40.148084' 287 N NAD 27 LONGITUDE: 81.362194' 362 W NAD 27

31. OHIO STATE PLANE GRID COORDINATE N: 784409.90' 389.43 OHIO SOUTH - NAD 27 E: 2318127.84' 02.12 LATITUDE: 40.148084' 287 N NAD 27 LONGITUDE: 81.362194' 362 W NAD 27

32. OHIO STATE PLANE GRID COORDINATE N: 784409.90' 389.43 OHIO SOUTH - NAD 27 E: 2318127.84' 02.12 LATITUDE: 40.148084' 287 N NAD 27 LONGITUDE: 81.362194' 362 W NAD 27

33. OHIO STATE PLANE GRID COORDINATE N: 784409.90' 389.43 OHIO SOUTH - NAD 27 E: 2318127.84' 02.12 LATITUDE: 40.148084' 287 N NAD 27 LONGITUDE: 81.362194' 362 W NAD 27

34. OHIO STATE PLANE GRID COORDINATE N: 784409.90' 389.43 OHIO SOUTH - NAD 27 E: 2318127.84' 02.12 LATITUDE: 40.148084' 287 N NAD 27 LONGITUDE: 81.362194' 362 W NAD 27

35. OHIO STATE PLANE GRID COORDINATE N: 784409.90' 389.43 OHIO SOUTH - NAD 27 E: 2318127.84' 02.12 LATITUDE: 40.148084' 287 N NAD 27 LONGITUDE: 81.362194' 362 W NAD 27

36. OHIO STATE PLANE GRID COORDINATE N: 784409.90' 389.43 OHIO SOUTH - NAD 27 E: 2318127.84' 02.12 LATITUDE: 40.148084' 287 N NAD 27 LONGITUDE: 81.362194' 362 W NAD 27

37. OHIO STATE PLANE GRID COORDINATE N: 784409.90' 389.43 OHIO SOUTH - NAD 27 E: 2318127.84' 02.12 LATITUDE: 40.148084' 287 N NAD 27 LONGITUDE: 81.362194' 362 W NAD 27

38. OHIO STATE PLANE GRID COORDINATE N: 784409.90' 389.43 OHIO SOUTH - NAD 27 E: 2318127.84' 02.12 LATITUDE: 40.148084' 287 N NAD 27 LONGITUDE: 81.362194' 362 W NAD 27

39. OHIO STATE PLANE GRID COORDINATE N: 784409.90' 389.43 OHIO SOUTH - NAD 27 E: 2318127.84' 02.12 LATITUDE: 40.148084' 287 N NAD 27 LONGITUDE: 81.362194' 362 W NAD 27

40. OHIO STATE PLANE GRID COORDINATE N: 784409.90' 389.43 OHIO SOUTH - NAD 27 E: 2318127.84' 02.12 LATITUDE: 40.148084' 287 N NAD 27 LONGITUDE: 81.362194' 362 W NAD 27

41. OHIO STATE PLANE GRID COORDINATE N: 784409.90' 389.43 OHIO SOUTH - NAD 27 E: 2318127.84' 02.12 LATITUDE: 40.148084' 287 N NAD 27 LONGITUDE: 81.362194' 362 W NAD 27

42. OHIO STATE PLANE GRID COORDINATE N: 784409.90' 389.43 OHIO SOUTH - NAD 27 E: 2318127.84' 02.12 LATITUDE: 40.148084' 287 N NAD 27 LONGITUDE: 81.362194' 362 W NAD 27

43. OHIO STATE PLANE GRID COORDINATE N: 784409.90' 389.43 OHIO SOUTH - NAD 27 E: 2318127.84' 02.12 LATITUDE: 40.148084' 287 N NAD 27 LONGITUDE: 81.362194' 362 W NAD 27

44. OHIO STATE PLANE GRID COORDINATE N: 784409.90' 389.43 OHIO SOUTH - NAD 27 E: 2318127.84' 02.12 LATITUDE: 40.148084' 287 N NAD 27 LONGITUDE: 81.362194' 362 W NAD 27

45. OHIO STATE PLANE GRID COORDINATE N: 784409.90' 389.43 OHIO SOUTH - NAD 27 E: 2318127.84' 02.12 LATITUDE: 40.148084' 287 N NAD 27 LONGITUDE: 81.362194' 362 W NAD 27

46. OHIO STATE PLANE GRID COORDINATE N: 784409.90' 389.43 OHIO SOUTH - NAD 27 E: 2318127.84' 02.12 LATITUDE: 40.148084' 287 N NAD 27 LONGITUDE: 81.362194' 362 W NAD 27

47. OHIO STATE PLANE GRID COORDINATE N: 784409.90' 389.43 OHIO SOUTH - NAD 27 E: 2318127.84' 02.12 LATITUDE: 40.148084' 287 N NAD 27 LONGITUDE: 81.362194' 362 W NAD 27

48. OHIO STATE PLANE GRID COORDINATE N: 784409.90' 389.43 OHIO SOUTH - NAD 27 E: 2318127.84' 02.12 LATITUDE: 40.148084' 287 N NAD 27 LONGITUDE: 81.362194' 362 W NAD 27

49. OHIO STATE PLANE GRID COORDINATE N: 784409.90' 389.43 OHIO SOUTH - NAD 27 E: 2318127.84' 02.12 LATITUDE: 40.148084' 287 N NAD 27 LONGITUDE: 81.362194' 362 W NAD 27

50. OHIO STATE PLANE GRID COORDINATE N: 784409.90' 389.43 OHIO SOUTH - NAD 27 E: 2318127.84' 02.12 LATITUDE: 40.148084' 287 N NAD 27 LONGITUDE: 81.362194' 362 W NAD 27

51. OHIO STATE PLANE GRID COORDINATE N: 784409.90' 389.43 OHIO SOUTH - NAD 27 E: 2318127.84' 02.12 LATITUDE: 40.148084' 287 N NAD 27 LONGITUDE: 81.362194' 362 W NAD 27

52. OHIO STATE PLANE GRID COORDINATE N: 784409.90' 389.43 OHIO SOUTH - NAD 27 E: 2318127.84' 02.12 LATITUDE: 40.148084' 287 N NAD 27 LONGITUDE: 81.362194' 362 W NAD 27

53. OHIO STATE PLANE GRID COORDINATE N: 784409.90' 389.43 OHIO SOUTH - NAD 27 E: 2318127.84' 02.12 LATITUDE: 40.148084' 287 N NAD 27 LONGITUDE: 81.362194' 362 W NAD 27

54. OHIO STATE PLANE GRID COORDINATE N: 784409.90' 389.43 OHIO SOUTH - NAD 27 E: 2318127.84' 02.12 LATITUDE: 40.148084' 287 N NAD 27 LONGITUDE: 81.362194' 362 W NAD 27

55. OHIO STATE PLANE GRID COORDINATE N: 784409.90' 389.43 OHIO SOUTH - NAD 27 E: