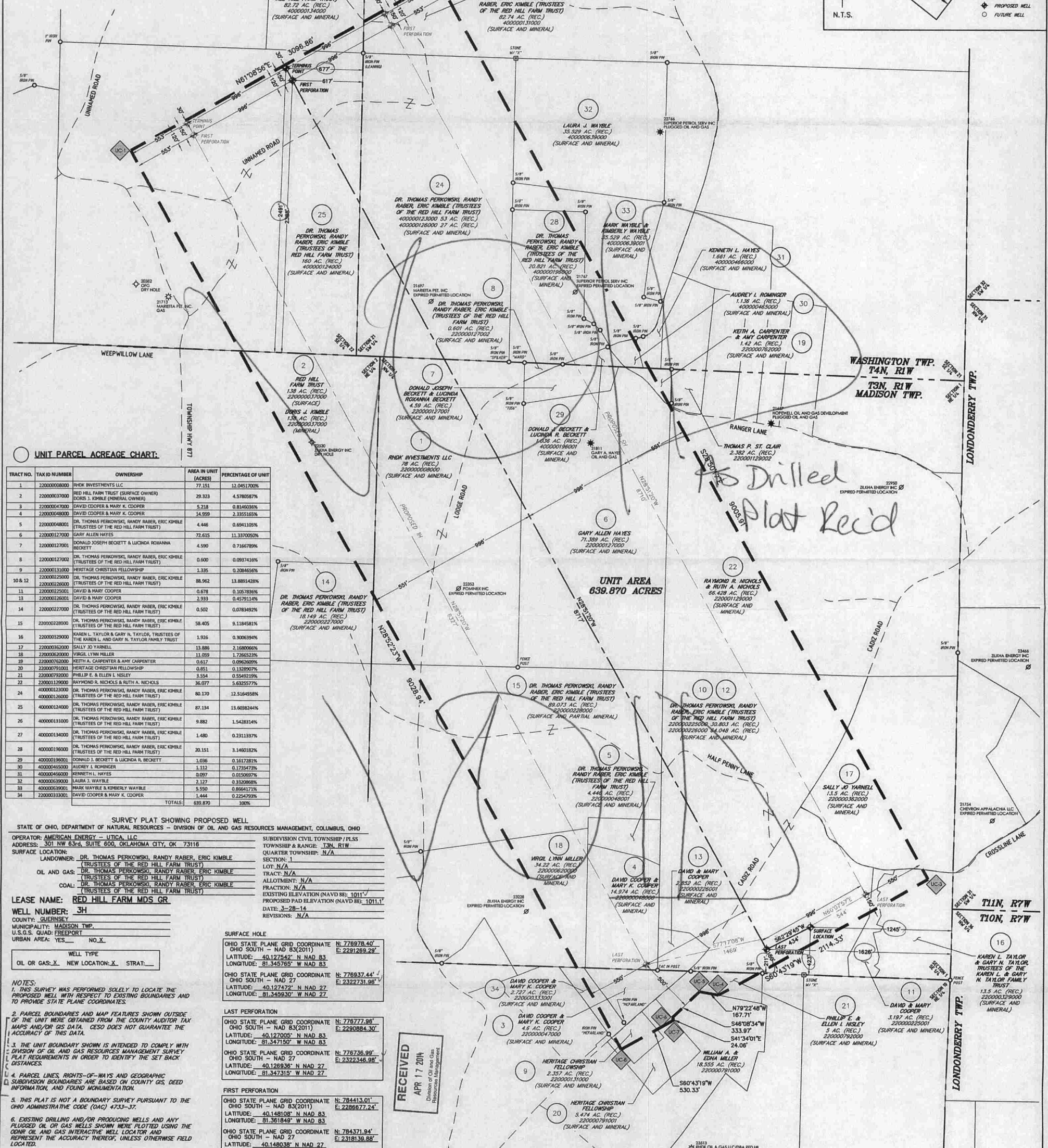


LOCATION MAP
(NOT TO SCALE)



UNIT PARCEL ACREAGE CHART:

| TRACT NO. | TAX ID NUMBER | OWNERSHIP | AREA IN UNIT (ACRES) | PERCENTAGE OF UNIT |
|-----------|---------------|--|----------------------|--------------------|
| 1 | 220000000000 | DR. THOMAS PERKOWSKI, RANDY RABER, ERIC KIMBLE (TRUSTEES OF THE RED HILL FARM TRUST) | 77.151 | 12.0451700% |
| 2 | 220000037000 | RED HILL FARM TRUST (SURFACE OWNER) | 29.323 | 4.5780587% |
| 3 | 220000047000 | DAVID COOPER & MARY K. COOPER | 5.218 | 0.8160288% |
| 4 | 220000048000 | DAVID COOPER & MARY K. COOPER | 14.959 | 2.3351659% |
| 5 | 220000048001 | DR. THOMAS PERKOWSKI, RANDY RABER, ERIC KIMBLE (TRUSTEES OF THE RED HILL FARM TRUST) | 4.446 | 0.6941059% |
| 6 | 220000127000 | GARY ALLEN HAYES | 72.615 | 11.3370050% |
| 7 | 220000127001 | DONALD JOSEPH BECKETT & LUCINDA ROXANNA BECKETT | 4.590 | 0.7166789% |
| 8 | 220000127002 | DR. THOMAS PERKOWSKI, RANDY RABER, ERIC KIMBLE (TRUSTEES OF THE RED HILL FARM TRUST) | 0.600 | 0.0931419% |
| 9 | 220000132000 | HERITAGE CHRISTIAN FELLOWSHIP | 1.335 | 0.2084656% |
| 10 & 12 | 220000225000 | DR. THOMAS PERKOWSKI, RANDY RABER, ERIC KIMBLE (TRUSTEES OF THE RED HILL FARM TRUST) | 88.962 | 13.8891428% |
| 11 | 220000225001 | DAVID & MARY COOPER | 0.678 | 0.1057836% |
| 13 | 220000226001 | DAVID & MARY COOPER | 2.933 | 0.4578114% |
| 14 | 220000227000 | DR. THOMAS PERKOWSKI, RANDY RABER, ERIC KIMBLE (TRUSTEES OF THE RED HILL FARM TRUST) | 0.502 | 0.0783492% |
| 15 | 220000228000 | DR. THOMAS PERKOWSKI, RANDY RABER, ERIC KIMBLE (TRUSTEES OF THE RED HILL FARM TRUST) | 58.405 | 9.1184581% |
| 16 | 220000229000 | KAREN L. TAYLOR & GARY N. TAYLOR, TRUSTEES OF THE KAREN L. & GARY N. TAYLOR FAMILY TRUST | 1.926 | 0.3006394% |
| 17 | 220000362000 | SALLY JO YARNELL | 13.886 | 2.1680066% |
| 18 | 220000362001 | VEROL LYN MILLER | 11.059 | 1.7266378% |
| 19 | 220000762000 | KEITH A. CARPENTER & AMY CARPENTER | 0.617 | 0.0962629% |
| 20 | 220000791001 | HERITAGE CHRISTIAN FELLOWSHIP | 0.851 | 0.1328907% |
| 21 | 220000792000 | PHILIP E. & ELLEN L. NISLEY | 3.554 | 0.5549219% |
| 22 | 220001125000 | RAYMOND R. NICHOLS & RUTH A. NICHOLS | 36.077 | 5.6325777% |
| 23 | 400000123000 | DR. THOMAS PERKOWSKI, RANDY RABER, ERIC KIMBLE (TRUSTEES OF THE RED HILL FARM TRUST) | 80.170 | 12.5164588% |
| 24 | 400000126000 | DR. THOMAS PERKOWSKI, RANDY RABER, ERIC KIMBLE (TRUSTEES OF THE RED HILL FARM TRUST) | 87.134 | 13.6038244% |
| 25 | 400000124000 | DR. THOMAS PERKOWSKI, RANDY RABER, ERIC KIMBLE (TRUSTEES OF THE RED HILL FARM TRUST) | 9.882 | 1.5428314% |
| 26 | 400000131000 | DR. THOMAS PERKOWSKI, RANDY RABER, ERIC KIMBLE (TRUSTEES OF THE RED HILL FARM TRUST) | 1.480 | 0.2311377% |
| 27 | 400000134000 | DR. THOMAS PERKOWSKI, RANDY RABER, ERIC KIMBLE (TRUSTEES OF THE RED HILL FARM TRUST) | 20.151 | 3.1480182% |
| 28 | 400000136000 | DR. THOMAS PERKOWSKI, RANDY RABER, ERIC KIMBLE (TRUSTEES OF THE RED HILL FARM TRUST) | 1.016 | 0.1572811% |
| 29 | 400000136001 | DONALD J. BECKETT & LUCINDA R. BECKETT | 1.112 | 0.1734778% |
| 30 | 400000450000 | AUDREY L. ROMINGER | 0.097 | 0.0150697% |
| 31 | 400000456000 | KENNETH L. HAYES | 2.127 | 0.3320868% |
| 32 | 400000539000 | LAURA J. WAYBLE | 5.550 | 0.8641711% |
| 33 | 400000539001 | MARK WAYBLE & KIMBERLY WAYBLE | 1.444 | 0.2254793% |
| 34 | 220000333001 | DAVID COOPER & MARY K. COOPER | TOTALS: | 639.870 100% |

STATE OF OHIO, DEPARTMENT OF NATURAL RESOURCES - DIVISION OF OIL AND GAS RESOURCES MANAGEMENT, COLUMBUS, OHIO

OPERATOR: AMERICAN ENERGY - UTICA, LLC
ADDRESS: 301 NW 63rd, SUITE 600, OKLAHOMA CITY, OK 73116

SURFACE LOCATION:
LANDOWNER: DR. THOMAS PERKOWSKI, RANDY RABER, ERIC KIMBLE (TRUSTEES OF THE RED HILL FARM TRUST)

OIL AND GAS: DR. THOMAS PERKOWSKI, RANDY RABER, ERIC KIMBLE (TRUSTEES OF THE RED HILL FARM TRUST)

COAL: DR. THOMAS PERKOWSKI, RANDY RABER, ERIC KIMBLE (TRUSTEES OF THE RED HILL FARM TRUST)

LEASE NAME: RED HILL FARM MDS GR

WELL NUMBER: 3H

COUNTY: GUERNSEY

MUNICIPALITY: MADISON TWP.

U.S.G.S. QUAD: FREEPORT

URBAN AREA: YES NO X

WELL TYPE
OIL OR GAS: X NEW LOCATION: X STRAT: _____

NOTES:
1. THIS SURVEY WAS PERFORMED SOLELY TO LOCATE THE PROPOSED WELL WITH RESPECT TO EXISTING BOUNDARIES AND TO PROVIDE STATE PLANE COORDINATES.

2. PARCEL BOUNDARIES AND MAP FEATURES SHOWN OUTSIDE OF THE UNIT WERE OBTAINED FROM THE COUNTY AUDITOR TAX MAPS AND/OR GIS DATA. CESO DOES NOT GUARANTEE THE ACCURACY OF THIS DATA.

3. THE UNIT BOUNDARY SHOWN IS INTENDED TO COMPLY WITH DIVISION OF OIL AND GAS RESOURCES MANAGEMENT SURVEY PLAT REQUIREMENTS IN ORDER TO IDENTIFY THE SET BACK DISTANCES.

4. PARCEL LINES, RIGHTS-OF-WAYS AND GEOGRAPHIC SUBDIVISION BOUNDARIES ARE BASED ON COUNTY GIS, DEED INFORMATION, AND FOUND MONUMENTATION.

5. THIS PLAT IS NOT A BOUNDARY SURVEY PURSUANT TO THE OHIO ADMINISTRATIVE CODE (OAC) 4733-37.

6. EXISTING DRILLING AND/OR PRODUCING WELLS AND ANY PLUGGED OIL OR GAS WELLS SHOWN WERE PLOTTED USING THE ODMR OIL AND GAS INTERACTIVE WELL LOCATOR AND REPRESENT THE ACCURACY THEREOF, UNLESS OTHERWISE FIELD LOCATED.

TERMINUS POINT
OHIO STATE PLANE GRID COORDINATE N: 742516.11' E: 228681.33'
OHIO SOUTH - NAD 83(2011)
LATITUDE: 40.148398° N NAD 83
LONGITUDE: 81.362051° W NAD 83

OHIO STATE PLANE GRID COORDINATE N: 744413.01' E: 228687.24'
OHIO SOUTH - NAD 83(2011)
LATITUDE: 40.148108° N NAD 83
LONGITUDE: 81.361849° W NAD 83

OHIO STATE PLANE GRID COORDINATE N: 74637.99' E: 2322346.98'
OHIO SOUTH - NAD 27
LATITUDE: 40.126936° N NAD 27
LONGITUDE: 81.347315° W NAD 27

OHIO STATE PLANE GRID COORDINATE N: 744413.01' E: 228687.24'
OHIO SOUTH - NAD 83(2011)
LATITUDE: 40.148108° N NAD 83
LONGITUDE: 81.361849° W NAD 83

OHIO STATE PLANE GRID COORDINATE N: 74637.99' E: 2322346.98'
OHIO SOUTH - NAD 27
LATITUDE: 40.126936° N NAD 27
LONGITUDE: 81.347315° W NAD 27

OHIO STATE PLANE GRID COORDINATE N: 744413.01' E: 228687.24'
OHIO SOUTH - NAD 83(2011)
LATITUDE: 40.148108° N NAD 83
LONGITUDE: 81.361849° W NAD 83

OHIO STATE PLANE GRID COORDINATE N: 74637.99' E: 2322346.98'
OHIO SOUTH - NAD 27
LATITUDE: 40.126936° N NAD 27
LONGITUDE: 81.347315° W NAD 27

OHIO STATE PLANE GRID COORDINATE N: 744413.01' E: 228687.24'
OHIO SOUTH - NAD 83(2011)
LATITUDE: 40.148108° N NAD 83
LONGITUDE: 81.361849° W NAD 83

OHIO STATE PLANE GRID COORDINATE N: 74637.99' E: 2322346.98'
OHIO SOUTH - NAD 27
LATITUDE: 40.126936° N NAD 27
LONGITUDE: 81.347315° W NAD 27

OHIO STATE PLANE GRID COORDINATE N: 744413.01' E: 228687.24'
OHIO SOUTH - NAD 83(2011)
LATITUDE: 40.148108° N NAD 83
LONGITUDE: 81.361849° W NAD 83

OHIO STATE PLANE GRID COORDINATE N: 74637.99' E: 2322346.98'
OHIO SOUTH - NAD 27
LATITUDE: 40.126936° N NAD 27
LONGITUDE: 81.347315° W NAD 27

OHIO STATE PLANE GRID COORDINATE N: 744413.01' E: 228687.24'
OHIO SOUTH - NAD 83(2011)
LATITUDE: 40.148108° N NAD 83
LONGITUDE: 81.361849° W NAD 83

OHIO STATE PLANE GRID COORDINATE N: 74637.99' E: 2322346.98'
OHIO SOUTH - NAD 27
LATITUDE: 40.126936° N NAD 27
LONGITUDE: 81.347315° W NAD 27

OHIO STATE PLANE GRID COORDINATE N: 744413.01' E: 228687.24'
OHIO SOUTH - NAD 83(2011)
LATITUDE: 40.148108° N NAD 83
LONGITUDE: 81.361849° W NAD 83

OHIO STATE PLANE GRID COORDINATE N: 74637.99' E: 2322346.98'
OHIO SOUTH - NAD 27
LATITUDE: 40.126936° N NAD 27
LONGITUDE: 81.347315° W NAD 27

OHIO STATE PLANE GRID COORDINATE N: 744413.01' E: 228687.24'
OHIO SOUTH - NAD 83(2011)
LATITUDE: 40.148108° N NAD 83
LONGITUDE: 81.361849° W NAD 83

OHIO STATE PLANE GRID COORDINATE N: 74637.99' E: 2322346.98'
OHIO SOUTH - NAD 27
LATITUDE: 40.126936° N NAD 27
LONGITUDE: 81.347315° W NAD 27

OHIO STATE PLANE GRID COORDINATE N: 744413.01' E: 228687.24'
OHIO SOUTH - NAD 83(2011)
LATITUDE: 40.148108° N NAD 83
LONGITUDE: 81.361849° W NAD 83

OHIO STATE PLANE GRID COORDINATE N: 74637.99' E: 2322346.98'
OHIO SOUTH - NAD 27
LATITUDE: 40.126936° N NAD 27
LONGITUDE: 81.347315° W NAD 27

OHIO STATE PLANE GRID COORDINATE N: 744413.01' E: 228687.24'
OHIO SOUTH - NAD 83(2011)
LATITUDE: 40.148108° N NAD 83
LONGITUDE: 81.361849° W NAD 83

OHIO STATE PLANE GRID COORDINATE N: 74637.99' E: 2322346.98'
OHIO SOUTH - NAD 27
LATITUDE: 40.126936° N NAD 27
LONGITUDE: 81.347315° W NAD 27

OHIO STATE PLANE GRID COORDINATE N: 744413.01' E: 228687.24'
OHIO SOUTH - NAD 83(2011)
LATITUDE: 40.148108° N NAD 83
LONGITUDE: 81.361849° W NAD 83

OHIO STATE PLANE GRID COORDINATE N: 74637.99' E: 2322346.98'
OHIO SOUTH - NAD 27
LATITUDE: 40.126936° N NAD 27
LONGITUDE: 81.347315° W NAD 27

OHIO STATE PLANE GRID COORDINATE N: 744413.01' E: 228687.24'
OHIO SOUTH - NAD 83(2011)
LATITUDE: 40.148108° N NAD 83
LONGITUDE: 81.361849° W NAD 83

OHIO STATE PLANE GRID COORDINATE N: 74637.99' E: 2322346.98'
OHIO SOUTH - NAD 27
LATITUDE: 40.126936° N NAD 27
LONGITUDE: 81.347315° W NAD 27

OHIO STATE PLANE GRID COORDINATE N: 744413.01' E: 228687.24'
OHIO SOUTH - NAD 83(2011)
LATITUDE: 40.148108° N NAD 83
LONGITUDE: 81.361849° W NAD 83

OHIO STATE PLANE GRID COORDINATE N: 74637.99' E: 2322346.98'
OHIO SOUTH - NAD 27
LATITUDE: 40.126936° N NAD 27
LONGITUDE: 81.347315° W NAD 27

OHIO STATE PLANE GRID COORDINATE N: 744413.01' E: 228687.24'
OHIO SOUTH - NAD 83(2011)
LATITUDE: 40.148108° N NAD 83
LONGITUDE: 81.361849° W NAD 83

OHIO STATE PLANE GRID COORDINATE N: 74637.99' E: 2322346.98'
OHIO SOUTH - NAD 27
LATITUDE: 40.126936° N NAD 27
LONGITUDE: 81.347315° W NAD 27

OHIO STATE PLANE GRID COORDINATE N: 744413.01' E: 228687.24'
OHIO SOUTH - NAD 83(2011)
LATITUDE: 40.148108° N NAD 83
LONGITUDE: 81.361849° W NAD 83

OHIO STATE PLANE GRID COORDINATE N: 74637.99' E: 2322346.98'
OHIO SOUTH - NAD 27
LATITUDE: 40.126936° N NAD 27
LONGITUDE: 81.347315° W NAD 27

OHIO STATE PLANE GRID COORDINATE N: 744413.01' E: 228687.24'
OHIO SOUTH - NAD 83(2011)
LATITUDE: 40.148108° N NAD 83
LONGITUDE: 81.361849° W NAD 83

OHIO STATE PLANE GRID COORDINATE N: 74637.99' E: 2322346.98'
OHIO SOUTH - NAD 27
LATITUDE: 40.126936° N NAD 27
LONGITUDE: 81.347315° W NAD 27

OHIO STATE PLANE GRID COORDINATE N: 744413.01' E: 228687.24'
OHIO SOUTH - NAD 83(2011)
LATITUDE: 40.148108° N NAD 83
LONGITUDE: 81.361849° W NAD 83

OHIO STATE PLANE GRID COORDINATE N: 74637.99' E: 2322346.98'
OHIO SOUTH - NAD 27
LATITUDE: 40.126936° N NAD 27
LONGITUDE: 81.347315° W NAD 27

OHIO STATE PLANE GRID COORDINATE N: 744413.01' E: 228687.24'
OHIO SOUTH - NAD 83(2011)
LATITUDE: 40.148108° N NAD 83
LONGITUDE: 81.361849° W NAD 83

OHIO STATE PLANE GRID COORDINATE N: 74637.99' E: 2322346.98'
OHIO SOUTH - NAD 27
LATITUDE: 40.126936° N NAD 27
LONGITUDE: 81.347315° W NAD 27

OHIO STATE PLANE GRID COORDINATE N: 744413.01' E: 228687.24'
OHIO SOUTH - NAD 83(2011)
LATITUDE: 40.148108° N NAD 83
LONGITUDE: 81.361849° W NAD 83

OHIO STATE PLANE GRID COORDINATE N: 74637.99' E: 2322346.98'
OHIO SOUTH - NAD 27
LATITUDE: 40.126936° N NAD 27
LONGITUDE: 81.347315° W NAD 27

OHIO STATE PLANE GRID COORDINATE N: 744413.01' E: 228687.24'
OHIO SOUTH - NAD 83(2011)
LATITUDE: 40.148108° N NAD 83
LONGITUDE: 81.361849° W NAD 83

OHIO STATE PLANE GRID COORDINATE N: 74637.99' E: 2322346.98'
OHIO SOUTH - NAD 27
LATITUDE: 40.126936° N NAD 27
LONGITUDE: 81.347315° W NAD 27

OHIO STATE PLANE GRID COORDINATE N: 744413.01' E: 228687.24'
OHIO SOUTH - NAD 83(2011)
LATITUDE: 40.148108° N NAD 83
LONGITUDE: 81.361849° W NAD 83

OHIO STATE PLANE GRID COORDINATE N: 74637.99' E: 2322346.98'
OHIO SOUTH - NAD 27
LATITUDE: 40.126936° N NAD 27
LONGITUDE: 81.347315° W NAD 27

OHIO STATE PLANE GRID COORDINATE N: 744413.01' E: 228687.24'
OHIO SOUTH - NAD 83(2011)
LATITUDE: 40.148108° N NAD 83
LONGITUDE: 81.361849° W NAD 83

OHIO STATE PLANE GRID COORDINATE N: 74637.99' E: 2322346.98'
OHIO SOUTH - NAD 27
LATITUDE: 40.126936° N NAD 27
LONGITUDE: 81.347315° W NAD 27

OHIO STATE PLANE GRID COORDINATE N: 744413.01' E: 228687.24'
OHIO SOUTH - NAD 83(2011)
LATITUDE: 40.148108° N NAD 83
LONGITUDE: 81.361849° W NAD 83

OHIO STATE PLANE GRID COORDINATE N: 74637.99' E: 2322346.98'
OHIO SOUTH - NAD 27
LATITUDE: 40.126936° N NAD 27
LONGITUDE: 81.347315° W NAD 27

OHIO STATE PLANE GRID COORDINATE N: 744413.01' E: 228687.24'
OHIO SOUTH - NAD 83(2011)
LATITUDE: 40.148108° N NAD 83
LONGITUDE: 81.361849° W NAD 83

OHIO STATE PLANE GRID COORDINATE N: 74637.99' E: 2322346.98'
OHIO SOUTH - NAD 27
LATITUDE: 40.126936° N NAD 27
LONGITUDE: 81.347315° W NAD 27

OHIO STATE PLANE GRID COORDINATE N: 744413.01' E: 228687.24'
OHIO SOUTH - NAD 83(2011)
LATITUDE: 40.148108° N NAD 83
LONGITUDE: 81.361849° W NAD 83

OHIO STATE PLANE GRID COORDINATE N: 74637.99' E: 2322346.98'
OHIO SOUTH - NAD 27
LATITUDE: 40.126936° N NAD 27
LONGITUDE: 81.347315° W NAD 27

OHIO STATE PLANE GRID COORDINATE N: 744413.01' E: 228687.24'
OHIO SOUTH - NAD 83(2011)
LATITUDE: 40.148108° N NAD 83
LONGITUDE: 81.361849° W NAD 83

OHIO STATE PLANE GRID COORDINATE N: 74637.99' E: 2322346.98'
OHIO SOUTH - NAD 27
LATITUDE: 40.126936° N NAD 27
LONGITUDE: 81.347315° W NAD 27

OHIO STATE PLANE GRID COORDINATE N: 744413.01' E: 228687.24'
OHIO SOUTH - NAD 83(2011)
LATITUDE: 40.148108° N NAD 83
LONGITUDE: 81.361849° W NAD 83

OHIO STATE PLANE GRID COORDINATE N: 74637.99' E: 2322346.98'
OHIO SOUTH - NAD 27
LATITUDE: 40.126936° N NAD 27
LONGITUDE: 81.347315° W NAD 27

OHIO STATE PLANE GRID COORDINATE N: 744413.01' E: 228687.24'
OHIO SOUTH - NAD 83(2011)
LATITUDE: 40.148108° N NAD 83
LONGITUDE: 81.361849° W NAD 83

OHIO STATE PLANE GRID COORDINATE N: 74637.99' E: 2322346.98'
OHIO SOUTH - NAD 27
LATITUDE: 40.126936° N NAD 27
LONGITUDE: 81.347315° W NAD 27

OHIO STATE PLANE GRID COORDINATE N: 744413.01' E: 228687.24'
OHIO SOUTH - NAD 83(2011)
LATITUDE: 40.148108° N NAD 83
LONGITUDE: 81.361849° W NAD 83

OHIO STATE PLANE GRID COORDINATE N: 74637.99' E: 2322346.98'
OHIO SOUTH - NAD 27
LATITUDE: 40.126936° N NAD 27
LONGITUDE: 81.347315° W NAD 27

OHIO STATE PLANE GRID COORDINATE N: 744413.01' E: 228687.24'
OHIO SOUTH - NAD 83(2011)
LATITUDE: 40.148108° N NAD 83
LONGITUDE: 81.361849° W NAD 83

OHIO STATE PLANE GRID COORDINATE N: 74637.99' E: 2322346.98'
OHIO SOUTH - NAD 27
LATITUDE: 40.126936° N NAD 27
LONGITUDE: 81.347315° W NAD 27

OHIO STATE PLANE GRID COORDINATE N: 744413.01' E: 228687.24'
OHIO SOUTH - NAD 83(2011)
LATITUDE: 40.148108° N NAD 83
LONGITUDE: 81.361849° W NAD 83

OHIO STATE PLANE GRID COORDINATE N: 74637.99' E: 2322346.98'
OHIO SOUTH - NAD 27
LATITUDE: 40.126936° N NAD 27
LONGITUDE: 81.347315° W NAD 27

OHIO STATE PLANE GRID COORDINATE N: 744413.01' E: 228687.24'
OHIO SOUTH - NAD 83(2011)
LATITUDE: 40.148108° N NAD 83
LONGITUDE: 81.361849° W NAD 83

OHIO STATE PLANE GRID COORDINATE N: 74637.99' E: 2322346.98'
OHIO SOUTH - NAD 27
LATITUDE: 40.126936° N NAD 27
LONGITUDE: 81.347315