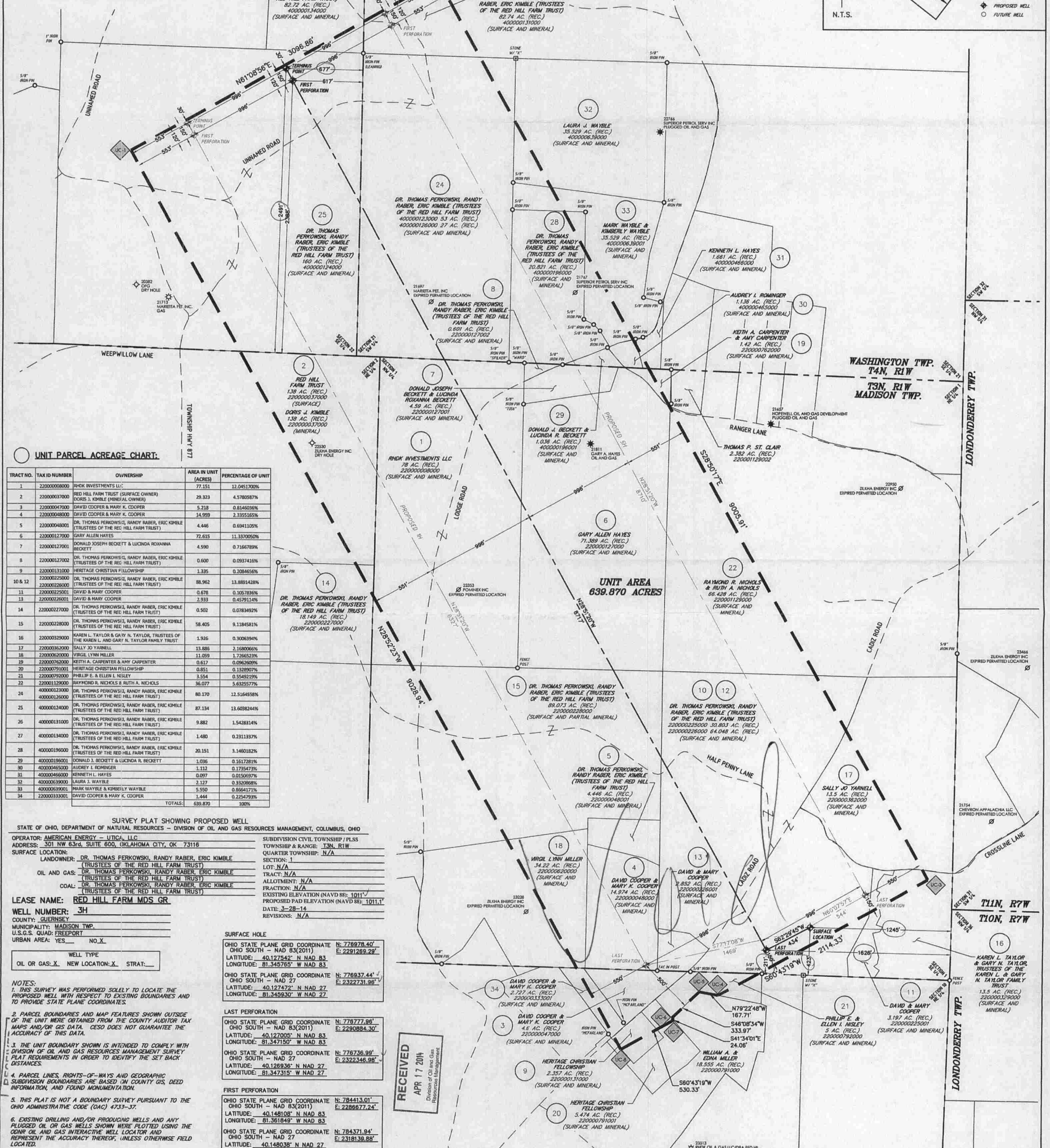


LOCATION MAP
(NOT TO SCALE)



UNIT PARCEL ACREAGE CHART:

TRACT NO.	TAX ID NUMBER	OWNERSHIP	AREA IN UNIT (ACRES)	PERCENTAGE OF UNIT
1	220000000000	SHOK INVESTMENTS LLC	77.151	12.0451700%
2	220000007000	RED HILL FARM TRUST (SURFACE OWNER)	29.323	4.5780587%
3	220000047000	DAVID COOPER & MARY K. COOPER	5.219	0.8146036%
4	220000048000	DAVID COOPER & MARY K. COOPER	14.959	2.3355165%
5	220000048001	DR. THOMAS PERKOWSKI, RANDY RABER, ERIC KIMBLE (TRUSTEES OF THE RED HILL FARM TRUST)	4.446	0.694105%
6	220000127000	GARY ALLEN HAYES	72.615	11.370050%
7	220000127001	DONALD JOSEPH BECKETT & LUCINDA ROXANNA BECKETT	4.590	0.7166789%
8	220000127002	DR. THOMAS PERKOWSKI, RANDY RABER, ERIC KIMBLE (TRUSTEES OF THE RED HILL FARM TRUST)	0.600	0.0937410%
9	220000131000	HERITAGE CHRISTIAN FELLOWSHIP	1.335	0.208656%
10 & 12	220000225000	DR. THOMAS PERKOWSKI, RANDY RABER, ERIC KIMBLE (TRUSTEES OF THE RED HILL FARM TRUST)	88.962	13.8891428%
11	220000225001	DAVID & MARY COOPER	0.678	0.1057836%
13	220000226001	DAVID & MARY COOPER	2.933	0.4579114%
14	220000227000	DR. THOMAS PERKOWSKI, RANDY RABER, ERIC KIMBLE (TRUSTEES OF THE RED HILL FARM TRUST)	0.502	0.0783492%
15	220000228000	DR. THOMAS PERKOWSKI, RANDY RABER, ERIC KIMBLE (TRUSTEES OF THE RED HILL FARM TRUST)	58.405	9.1184581%
16	220000329000	KAREN L. TAYLOR & GARY N. TAYLOR, TRUSTEES OF THE KAREN L. AND GARY N. TAYLOR FAMILY TRUST	1.935	0.3006394%
17	220000362000	SALLY JO YARNELL	13.885	2.169066%
18	220000362001	VIRGIL LYNN MILLER	11.059	1.726523%
19	220000762000	KEITH A. CARPENTER & AMY CARPENTER	0.617	0.0962609%
20	220000791001	HERITAGE CHRISTIAN FELLOWSHIP	0.851	0.1328907%
21	220000792000	PHILIP E. & ELLEN I. HESLEY	3.554	0.5549219%
22	220001129000	RAYMOND R. NICHOLS & RUTH A. NICHOLS	36.077	5.625577%
23	400000123000	DR. THOMAS PERKOWSKI, RANDY RABER, ERIC KIMBLE (TRUSTEES OF THE RED HILL FARM TRUST)	80.170	12.5164588%
24	400000126000	DR. THOMAS PERKOWSKI, RANDY RABER, ERIC KIMBLE (TRUSTEES OF THE RED HILL FARM TRUST)	87.134	13.603244%
25	400000124000	DR. THOMAS PERKOWSKI, RANDY RABER, ERIC KIMBLE (TRUSTEES OF THE RED HILL FARM TRUST)	9.882	1.5428314%
26	400000131000	DR. THOMAS PERKOWSKI, RANDY RABER, ERIC KIMBLE (TRUSTEES OF THE RED HILL FARM TRUST)	1.480	0.2311937%
27	400000134000	DR. THOMAS PERKOWSKI, RANDY RABER, ERIC KIMBLE (TRUSTEES OF THE RED HILL FARM TRUST)	20.151	3.1460182%
28	400000196000	DR. THOMAS PERKOWSKI, RANDY RABER, ERIC KIMBLE (TRUSTEES OF THE RED HILL FARM TRUST)	1.036	0.1617281%
29	400000196001	DONALD J. BECKETT & LUCINDA R. BECKETT	1.132	0.175473%
30	400000465000	AUDREY L. ROMINGER	0.097	0.0150597%
31	400000466000	KENNETH L. HAYES	2.127	0.332068%
32	400000390000	LAURA J. WAYBLE	5.550	0.8664171%
33	400000390001	MARK WAYBLE & KIMBERLY WAYBLE	1.444	0.224793%
34	220000333001	DAVID COOPER & MARY K. COOPER	TOTALS:	639.870 100%

STATE OF OHIO, DEPARTMENT OF NATURAL RESOURCES - DIVISION OF OIL AND GAS RESOURCES MANAGEMENT, COLUMBUS, OHIO

OPERATOR: AMERICAN ENERGY - UTICA, LLC
ADDRESS: 301 NW 63rd, SUITE 600, OKLAHOMA CITY, OK 73116

SURFACE LOCATION: DR. THOMAS PERKOWSKI, RANDY RABER, ERIC KIMBLE (TRUSTEES OF THE RED HILL FARM TRUST)

OIL AND GAS: DR. THOMAS PERKOWSKI, RANDY RABER, ERIC KIMBLE (TRUSTEES OF THE RED HILL FARM TRUST)

COAL: DR. THOMAS PERKOWSKI, RANDY RABER, ERIC KIMBLE (TRUSTEES OF THE RED HILL FARM TRUST)

LEASE NAME: RED HILL FARM MDS GR

WELL NUMBER: 3H

COUNTY: GUERNSEY

MUNICIPALITY: MADISON TWP.

U.S.G.S. QUAD: FREEPORT

URBAN AREA: YES NO X

WELL TYPE: SURFACE HOLE

OIL OR GAS: X NEW LOCATION: X STRAT: X

NOTES:

1. THIS SURVEY WAS PERFORMED SOLELY TO LOCATE THE PROPOSED WELL WITH RESPECT TO EXISTING BOUNDARIES AND TO PROVIDE STATE PLANE COORDINATES.

2. PARCEL BOUNDARIES AND MAP FEATURES SHOWN OUTSIDE OF THE UNIT WERE OBTAINED FROM THE COUNTY AUDITOR TAX MAPS AND/OR GIS DATA. CESO DOES NOT GUARANTEE THE ACCURACY OF THIS DATA.

3. THE UNIT BOUNDARY SHOWN IS INTENDED TO COMPLY WITH DIVISION OF OIL AND GAS RESOURCES MANAGEMENT SURVEY PLAT REQUIREMENTS IN ORDER TO IDENTIFY THE SET BACK DISTANCES.

4. PARCEL LINES, RIGHTS-OF-WAYS AND GEOGRAPHIC SUBDIVISION BOUNDARIES ARE BASED ON COUNTY GIS, DEED INFORMATION, AND FOUND MONUMENTATION.

5. THIS PLAT IS NOT A BOUNDARY SURVEY PURSUANT TO THE OHIO ADMINISTRATIVE CODE (OAC) 4733-37.

6. EXISTING DRILLING AND/OR PRODUCING WELLS AND ANY PLUGGED OIL OR GAS WELLS SHOWN WERE PLOTTED USING THE OIL AND GAS INTERACTIVE WELL LOCATOR AND REPRESENT THE ACCURACY THEREOF, UNLESS OTHERWISE FIELD LOCATED.

TERMINUS POINT

OHIO STATE PLANE GRID COORDINATE N: 784518.11

OHIO SOUTH - NAD 83(2011) E: 2286619.33

OHIO STATE PLANE GRID COORDINATE N: 784518.11

OHIO SOUTH - NAD 83(2011) E: 2286619.33

OHIO STATE PLANE GRID COORDINATE N: 784518.11

OHIO SOUTH - NAD 83(2011) E: 2286619.33

OHIO STATE PLANE GRID COORDINATE N: 784518.11

OHIO SOUTH - NAD 83(2011) E: 2286619.33

OHIO STATE PLANE GRID COORDINATE N: 784518.11

OHIO SOUTH - NAD 83(2011) E: 2286619.33

OHIO STATE PLANE GRID COORDINATE N: 784518.11

OHIO SOUTH - NAD 83(2011) E: 2286619.33

OHIO STATE PLANE GRID COORDINATE N: 784518.11

OHIO SOUTH - NAD 83(2011) E: 2286619.33

OHIO STATE PLANE GRID COORDINATE N: 784518.11

OHIO SOUTH - NAD 83(2011) E: 2286619.33

OHIO STATE PLANE GRID COORDINATE N: 784518.11

OHIO SOUTH - NAD 83(2011) E: 2286619.33

OHIO STATE PLANE GRID COORDINATE N: 784518.11

OHIO SOUTH - NAD 83(2011) E: 2286619.33

OHIO STATE PLANE GRID COORDINATE N: 784518.11

OHIO SOUTH - NAD 83(2011) E: 2286619.33

OHIO STATE PLANE GRID COORDINATE N: 784518.11

OHIO SOUTH - NAD 83(2011) E: 2286619.33

OHIO STATE PLANE GRID COORDINATE N: 784518.11

OHIO SOUTH - NAD 83(2011) E: 2286619.33

OHIO STATE PLANE GRID COORDINATE N: 784518.11

OHIO SOUTH - NAD 83(2011) E: 2286619.33

OHIO STATE PLANE GRID COORDINATE N: 784518.11

OHIO SOUTH - NAD 83(2011) E: 2286619.33

OHIO STATE PLANE GRID COORDINATE N: 784518.11

OHIO SOUTH - NAD 83(2011) E: 2286619.33

OHIO STATE PLANE GRID COORDINATE N: 784518.11

OHIO SOUTH - NAD 83(2011) E: 2286619.33

OHIO STATE PLANE GRID COORDINATE N: 784518.11

OHIO SOUTH - NAD 83(2011) E: 2286619.33

OHIO STATE PLANE GRID COORDINATE N: 784518.11

OHIO SOUTH - NAD 83(2011) E: 2286619.33

OHIO STATE PLANE GRID COORDINATE N: 784518.11

OHIO SOUTH - NAD 83(2011) E: 2286619.33

OHIO STATE PLANE GRID COORDINATE N: 784518.11

OHIO SOUTH - NAD 83(2011) E: 2286619.33

OHIO STATE PLANE GRID COORDINATE N: 784518.11

OHIO SOUTH - NAD 83(2011) E: 2286619.33

OHIO STATE PLANE GRID COORDINATE N: 784518.11

OHIO SOUTH - NAD 83(2011) E: 2286619.33

OHIO STATE PLANE GRID COORDINATE N: 784518.11

OHIO SOUTH - NAD 83(2011) E: 2286619.33

OHIO STATE PLANE GRID COORDINATE N: 784518.11

OHIO SOUTH - NAD 83(2011) E: 2286619.33

OHIO STATE PLANE GRID COORDINATE N: 784518.11

OHIO SOUTH - NAD 83(2011) E: 2286619.33

OHIO STATE PLANE GRID COORDINATE N: 784518.11

OHIO SOUTH - NAD 83(2011) E: 2286619.33

OHIO STATE PLANE GRID COORDINATE N: 784518.11

OHIO SOUTH - NAD 83(2011) E: 2286619.33

OHIO STATE PLANE GRID COORDINATE N: 784518.11

OHIO SOUTH - NAD 83(2011) E: 2286619.33

OHIO STATE PLANE GRID COORDINATE N: 784518.11

OHIO SOUTH - NAD 83(2011) E: 2286619.33

OHIO STATE PLANE GRID COORDINATE N: 784518.11

OHIO SOUTH - NAD 83(2011) E: 2286619.33

OHIO STATE PLANE GRID COORDINATE N: 784518.11

OHIO SOUTH - NAD 83(2011) E: 2286619.33

OHIO STATE PLANE GRID COORDINATE N: 784518.11

OHIO SOUTH - NAD 83(2011) E: 2286619.33

OHIO STATE PLANE GRID COORDINATE N: 784518.11

OHIO SOUTH - NAD 83(2011) E: 2286619.33

OHIO STATE PLANE GRID COORDINATE N: 784518.11

OHIO SOUTH - NAD 83(2011) E: 2286619.33

OHIO STATE PLANE GRID COORDINATE N: 784518.11

OHIO SOUTH - NAD 83(2011) E: 2286619.33

OHIO STATE PLANE GRID COORDINATE N: 784518.11

OHIO SOUTH - NAD 83(2011) E: 2286619.33

OHIO STATE PLANE GRID COORDINATE N: 784518.11

OHIO SOUTH - NAD 83(2011) E: 2286619.33

OHIO STATE PLANE GRID COORDINATE N: 784518.11

OHIO SOUTH - NAD 83(2011) E: 2286619.33

OHIO STATE PLANE GRID COORDINATE N: 784518.11

OHIO SOUTH - NAD 83(2011) E: 2286619.33

OHIO STATE PLANE GRID COORDINATE N: 784518.11

OHIO SOUTH - NAD 83(2011) E: 2286619.33

OHIO STATE PLANE GRID COORDINATE N: 784518.11

OHIO SOUTH - NAD 83(2011) E: 2286619.33

OHIO STATE PLANE GRID COORDINATE N: 784518.11

OHIO SOUTH - NAD 83(2011) E: 2286619.33

OHIO STATE PLANE GRID COORDINATE N: 784518.11

OHIO SOUTH - NAD 83(2011) E: 2286619.33

OHIO STATE PLANE GRID COORDINATE N: 784518.11

OHIO SOUTH - NAD 83(2011) E: 2286619.33

OHIO STATE PLANE GRID COORDINATE N: 784518.11

OHIO SOUTH - NAD 83(2011) E: 2286619.33

OHIO STATE PLANE GRID COORDINATE N: 784518.11

OHIO SOUTH - NAD 83(2011) E: 2286619.33

OHIO STATE PLANE GRID COORDINATE N: 784518.11

OHIO SOUTH - NAD 83(2011) E: 2286619.33

OHIO STATE PLANE GRID COORDINATE N: 784518.11

OHIO SOUTH - NAD 83(2011) E: 2286619.33

OHIO STATE PLANE GRID COORDINATE N: 784518.11

OHIO SOUTH - NAD 83(2011) E: 2286619.33

OHIO STATE PLANE GRID COORDINATE N: 784518.11

OHIO SOUTH - NAD 83(2011) E: 2286619.33

OHIO STATE PLANE GRID COORDINATE N: 784518.11

OHIO SOUTH - NAD 83(2011) E: 2286619.33

OHIO STATE PLANE GRID COORDINATE N: 784518.11

OHIO SOUTH - NAD 83(2011) E: 2286619.33

OHIO STATE PLANE GRID COORDINATE N: 784518.11

OHIO SOUTH - NAD 83(2011) E: 2286619.33

OHIO STATE PLANE GRID COORDINATE N: 784518.11

OHIO SOUTH - NAD 83(2011) E: 2286619.33

OHIO STATE PLANE GRID COORDINATE N: 784518.11

OHIO SOUTH - NAD 83(2011) E: 2286619.33

OHIO STATE PLANE GRID COORDINATE N: 784518.11

OHIO SOUTH - NAD 83(2011) E: 2286619.33

OHIO STATE PLANE GRID COORDINATE N: 784518.11

OHIO SOUTH - NAD 83(2011) E: 2286619.33

OHIO STATE PLANE GRID COORDINATE N: 784518.11

OHIO SOUTH - NAD 83(2011) E: 2286619.33

OHIO STATE PLANE GRID COORDINATE N: 784518.11

OHIO SOUTH - NAD 83(2011) E: 2286619.33

OHIO STATE PLANE GRID COORDINATE N: 784518.11

OHIO SOUTH - NAD 83(2011) E: 2286619.33

OHIO STATE PLANE GRID COORDINATE N: 784518.11

OHIO SOUTH - NAD 83(2011) E: 2286619.33

OHIO STATE PLANE GRID COORDINATE N: 784518.11

OHIO SOUTH - NAD 83(2011) E: 2286619.33

OHIO STATE PLANE GRID COORDINATE N: 784518.11

OHIO SOUTH - NAD 83(2011) E: 2286619.33

OHIO STATE PLANE GRID COORDINATE N: 784518.11

OHIO SOUTH - NAD 83(2011) E: 2286619.33

OHIO STATE PLANE GRID COORDINATE N: 784518.11

OHIO SOUTH - NAD 83(2011) E: 2286619.33

OHIO STATE PLANE GRID COORDINATE N: 784518.11

OHIO SOUTH - NAD 83(2011) E: 2286619.33

OHIO STATE PLANE GRID COORDINATE N: 784518.11

OHIO SOUTH - NAD 83(2011) E: 2286619.33

OHIO STATE PLANE GRID COORDINATE N: 784518.11

OHIO SOUTH - NAD 83(2011) E: 2286619.33

OHIO STATE PLANE GRID COORDINATE N: 784518.11